

# BSP Features



# Board Support Package

- ✘ Embedded Linux OS
- ✘ System Settings
- ✘ <https://www.exorint.com/en/panel-bsp>
- ✘ Update
  - ✘ Web browser
  - ✘ USB
  - ✘ JMobile Studio



# System Settings

- ✘ [https://\[IP\]/machine\\_config](https://[IP]/machine_config)
- ✘ [https://\[IP\]/system\\_settings](https://[IP]/system_settings)

## System Settings

Localisation

---

System

---

Logs

---

Date & Time

---

Network

---

Security

---

Applications

---

Services

---

Management

---

Display

---

# Localisation

- ✘ **Systeeminstellingen taal**
- ✘ **System Keyboard Layout**



Language:	
<input checked="" type="checkbox"/>	English
	Italiano
	Deutsch
	Français
	简体中文
	繁體中文
	한국어
	日本語
	Español
	Português - Brasileiro
	Русский

## x Status

- x RAM
- x Uptime
- x CPU Usage

## x Timers

- x Garantie eX700 30.000 uur

## x Sensors

- x JSmart, XA en X5

Status	
Free RAM	650 Mb
Uptime	474 seconds
Average CPU Usage	<b>10s</b>
CPU 0	7%
CPU 1	7%

Timers	
System on	221 hours
Backlight on	214 hours

Sensors	
Temperature	33.4 °C
Humidity	39 %RH
Pressure	1.028 bar
Working voltage	12.245 V
Absorbed current	0.716 A

```
Feb 15 11:13:26 HMI-3510 syslog.info syslogd started: BusyBox v1.31.0
Feb 15 11:13:26 HMI-3510 user.notice kernel: klogd started: BusyBox v1.31.0 (2022-01-25 14:28:18 UTC)
Feb 15 11:13:26 HMI-3510 user.info kernel: Booting Linux on physical CPU 0x0
Feb 15 11:13:26 HMI-3510 user.notice kernel: Linux version 4.14.78-rt47-1.0.0-ga (oe-user@oe-host) (gcc
Feb 15 11:13:26 HMI-3510 user.info kernel: CPU: ARMv7 Processor [412fc09a] revision 10 (ARMv7), cr=10c
Feb 15 11:13:26 HMI-3510 user.info kernel: CPU: PIPT / VIPT nonaliasing data cache, VIPT aliasing inst
Feb 15 11:13:26 HMI-3510 user.info kernel: OF: fdt: Machine model: eTOP7xx i.MX6 DualLite Board
Feb 15 11:13:26 HMI-3510 user.info kernel: Memory policy: Data cache writealloc
Feb 15 11:13:26 HMI-3510 user.info kernel: Reserved memory: created CMA memory pool at 0x3c000000, size
Feb 15 11:13:26 HMI-3510 user.info kernel: OF: reserved mem: initialized node linux,cma, compatible id
Feb 15 11:13:26 HMI-3510 user.debug kernel: On node 0 totalpages: 262144
Feb 15 11:13:26 HMI-3510 user.debug kernel: free_area_init_node: node 0, pgdat 80e6a3c0, node_mem_map :
Feb 15 11:13:26 HMI-3510 user.debug kernel:   Normal zone: 2304 pages used for memmap
Feb 15 11:13:26 HMI-3510 user.debug kernel:   Normal zone: 0 pages reserved
Feb 15 11:13:26 HMI-3510 user.debug kernel:   Normal zone: 262144 pages, LIFO batch:31
Feb 15 11:13:26 HMI-3510 user.info kernel: percpu: Embedded 17 pages/cpu @ab611000 s37216 r8192 d24224
Feb 15 11:13:26 HMI-3510 user.debug kernel: pcpu-alloc: s37216 r8192 d24224 u69632 alloc=17*4096
Feb 15 11:13:26 HMI-3510 user.debug kernel: pcpu-alloc: [0] 0 [0] 1
Feb 15 11:13:26 HMI-3510 user.info kernel: Built 1 zonelists, mobility grouping on. Total pages: 2598
Feb 15 11:13:26 HMI-3510 user.notice kernel: Kernel command line: console=/dev/null pcie_tseladdr=00:3
Feb 15 11:13:26 HMI-3510 user.info kernel: PID hash table entries: 4096 (order: 2, 16384 bytes)
Feb 15 11:13:26 HMI-3510 user.info kernel: Dentry cache hash table entries: 131072 (order: 8, 1048576
Feb 15 11:13:26 HMI-3510 user.info kernel: Inode-cache hash table entries: 65536 (order: 6, 262144 byt
Feb 15 11:13:26 HMI-3510 user.info kernel: Memory: 695192K/1048576K available (8192K kernel code, 429K
Feb 15 11:13:26 HMI-3510 user.notice kernel: Virtual kernel memory layout:
Feb 15 11:13:26 HMI-3510 user.notice kernel:   vector : 0xffff0000 - 0xffff1000   ( 4 kB)
Feb 15 11:13:26 HMI-3510 user.notice kernel:   fixmap : 0xffc00000 - 0xffff0000   (3072 kB)
Feb 15 11:13:26 HMI-3510 user.notice kernel:   vmalloc : 0xc0800000 - 0xff800000   (1008 MB)
Feb 15 11:13:26 HMI-3510 user.notice kernel:   lowmem  : 0x80000000 - 0xc0000000   (1024 MB)
Feb 15 11:13:26 HMI-3510 user.notice kernel:   pkmap  : 0x7fe00000 - 0x80000000   ( 2 MB)
Feb 15 11:13:26 HMI-3510 user.notice kernel:   modules: 0x7f000000 - 0x7fe00000   ( 14 MB)
Feb 15 11:13:26 HMI-3510 user.notice kernel:   .text : 0x80008000 - 0x80900000   (9184 kB)
Feb 15 11:13:26 HMI-3510 user.notice kernel:   .init  : 0x80d00000 - 0x80e00000   (1024 kB)
Feb 15 11:13:26 HMI-3510 user.notice kernel:   .data : 0x80e00000 - 0x80e6b520   ( 430 kB)
Feb 15 11:13:26 HMI-3510 user.notice kernel:   .bss  : 0x80e6b520 - 0x80ed7f30   ( 435 kB)
Feb 15 11:13:26 HMI-3510 user.info kernel: SLUB: HWalign=64, Order=0-3, MinObjects=0, CPUs=2, Nodes=1
```

**X Persistent**

**X Save (download)**

- ✘ Timezone
- ✘ Network Time Protocol
  - ✘ Client
  - ✘ Server

### Date & Time

Current Timezone	Europe/Amsterdam (+0100)
Current Date	Monday, March 9, 2020
Local Time	10:05 AM
Automatic Update (NTP)	pool.ntp.org ✓ Last sync: 28s ago
Accept NTP requests	<input type="checkbox"/>

# NTP Client / Server





**Network** EDI

General Settings

Hostname EJMDD  
Avahi Hostname EJMDD.local

Network Interfaces

Name	Label	MAC	DHCP	Address	Netmask	Gateway
eth0	WAN	00:30:d8:08:56:49	Disabled	10.10.22.67	255.255.0.0	
wifi0	WIFI	88:da:1a:83:29:24	Disabled	172.16.0.1	255.255.255.0	

Wireless Networking

Interface Name wifi0 

Enabled Yes

Mode Access Point

Network Name JSmart710

Channel Auto

Encryption WPA-PSK

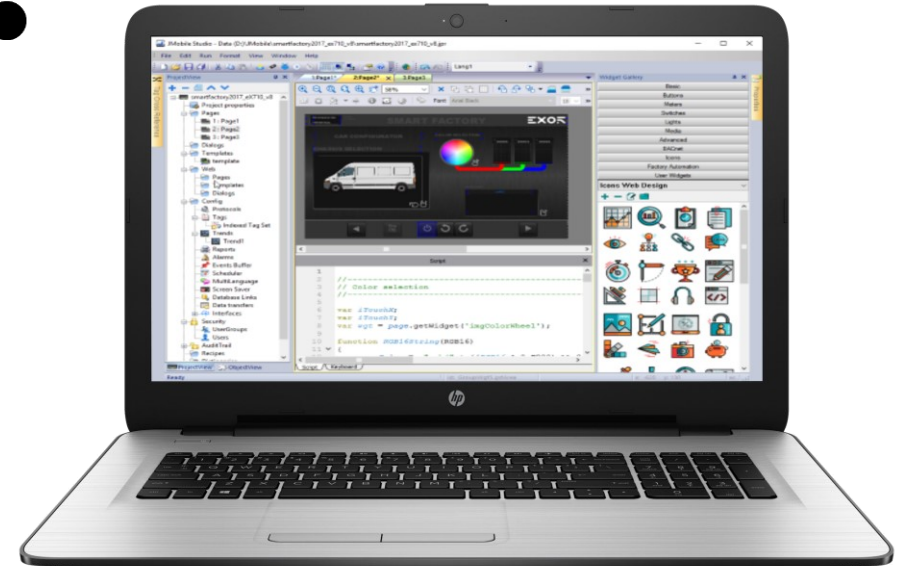
State COMPLETED ✓

Connected Stations 1

- ✘ **Hostname**
- ✘ **Ethernet interfaces**
- ✘ **Wi-Fi**
  - ✘ **Client**
  - ✘ **Access Point**
- ✘ **DNS**

# Access point

- ✗ DHCP
- ✗ Routing



- ✘ Project encryptie
  - ✘ Jmobile 4.5

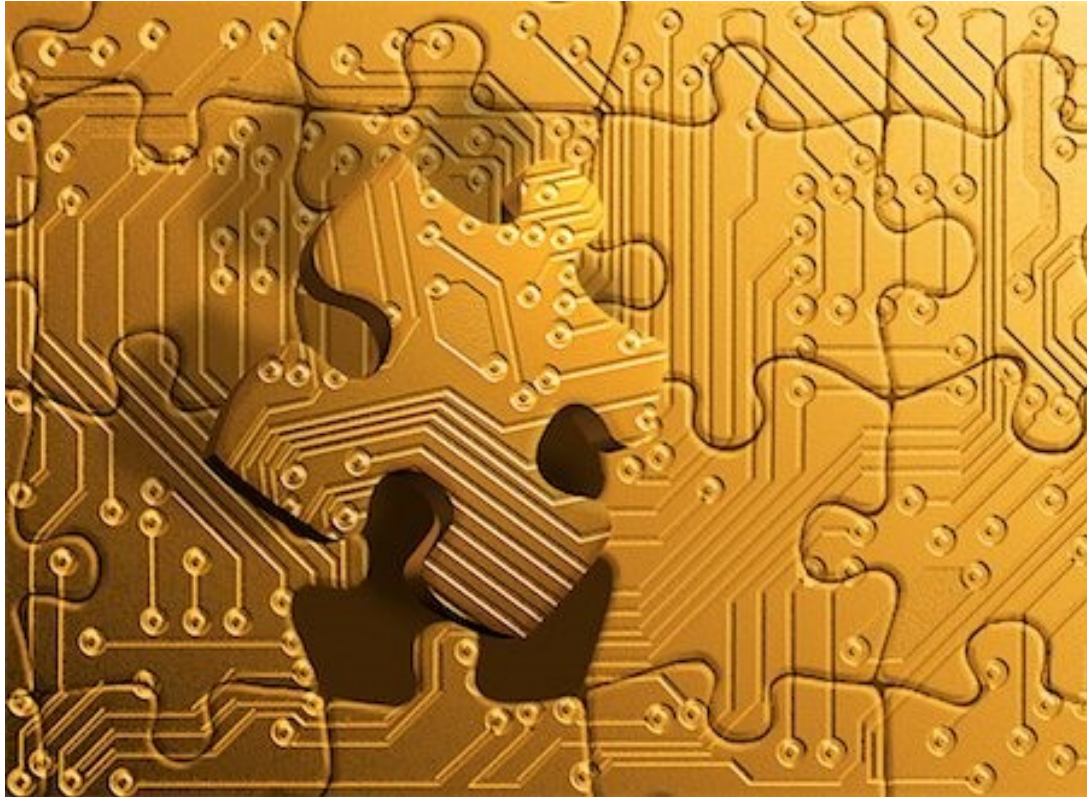


Credentials		
Domain	Secret ID	Description
HMI Runtime	Project Encryption	Password to encrypt the project

## x Apps

- x JMobile
- x CODESYS Target / WebVisu
- x Chromium
- x VNC Client

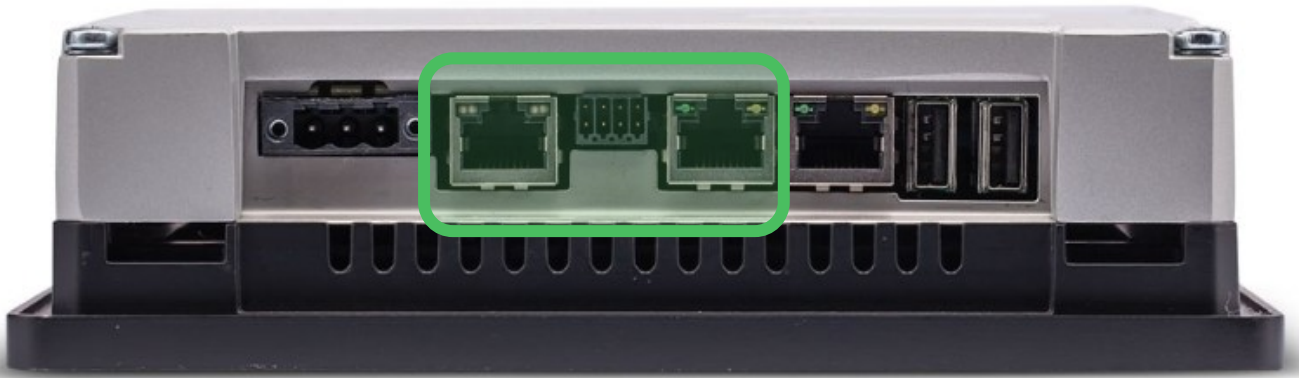
App Management		
Name	Version	Autostart
HMI Runtime	4.5.0.353	<input checked="" type="checkbox"/>



- ✘ **Bridge**
- ✘ **Cloud**
- ✘ **DHCP**
- ✘ **Device Restore**
- ✘ **Router / NAT / Port forwarding**
- ✘ **Firewall**
- ✘ **SSH**
- ✘ **VNC**

# Services - Bridge / Switch

- ✘ 1 IP adres
  - ✘ eth0 en eth1
  - ✘ eth0 en eth2
  - ✘ br0



SAVE ✓ CANCEL ✘

### Bridge/Switch Service

Enabled

Type SW Bridge (br0)

Network Interfaces

eth0 eth1

eth0

eth1

eth2



# Services: Cloud

- ✘ Corvina Cloud 1
  - ✘ VPN
- ✘ Open VPN

SAVE ✓ CANCEL ✘

### Cloud Service

**Enabled**

**Autostart**

**State**   Idle

**Server Type** Cloud Server ▼

**Server** default  
default

**Username** eX707@ejmdd

**Password**

**Show password**



SAVE ✓ CANCEL ✕

## DHCP Server

eth0 wifi

**Enabled**

**Start IP** 172.27.73.100

**End IP** 172.27.73.199

**Gateway** 172.27.73.1

**Netmask** 255.255.255.0

**DNS Servers** 172.27.73.1

**Lease Time (seconds)** 86400

- ✕ IP bereik
- ✕ Per interface

# Services: Device restore

x TAP TAP

x USB

Enable device restore via TAP TAP option



Enable device restore via USB



# Services: Router / NAT / Port forwarding

## x Router

- x Enable (Corvina Cloud End-Points)
- x Port Forwarding Rules
- x 1:1 NAT Rules

Router / NAT / Port forwarding

Enabled

**Port Forwarding Rules**

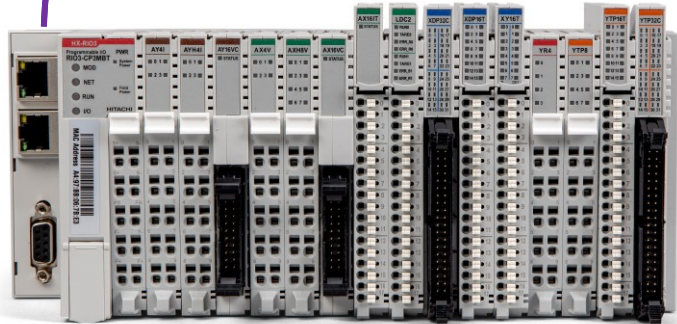
Enabled	Name	Source Interface	Source Port	Device IP	Device Port		
<input type="checkbox"/>	<input type="text" value="New Rule"/>	<input type="text" value=""/>	<input type="text" value=""/>	<input type="text" value=""/>	<input type="text" value=""/>	<input type="button" value="↑"/>	<input type="button" value="↓"/>

**1:1 NAT Rules**

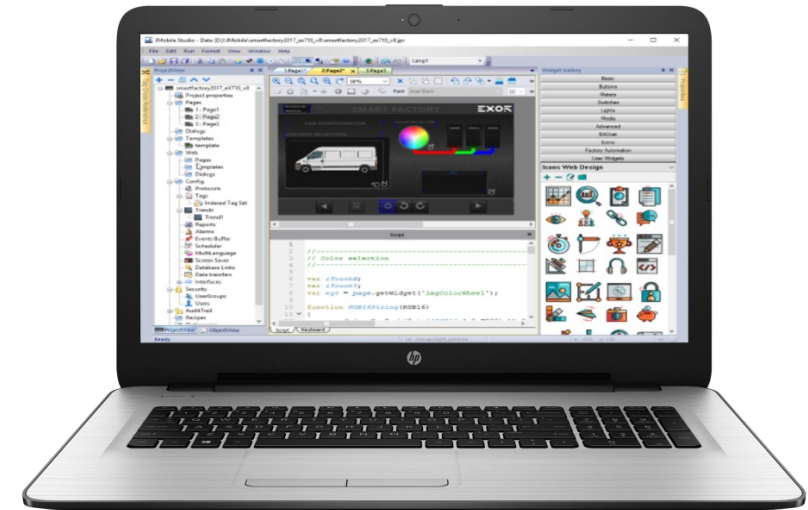
Enabled	Name	Source Interface	Source IP	Device IP	Port or Range (empty or P1 or P1-Pn)		
<input type="checkbox"/>	<input type="text" value="New Rule"/>	<input type="text" value=""/>	<input type="text" value=""/>	<input type="text" value=""/>	<input type="text" value=""/>	<input type="button" value="↑"/>	<input type="button" value="↓"/>

# Services: 1-1 NAT

192.168.100.\*



10.0.0.\*



# Services: Router / NAT / Port forwarding

## 1:1 NAT Rules

Enabled	Name	Source Interface	Source IP	Device IP	Port or Range (empty or P1 or P1-Pn)
<input checked="" type="checkbox"/>	New Rule	wifi0	10.0.0.100	192.168.100.100	

## Network Interfaces

Name	Label	MAC	DHCP
eth0	WAN	00:30:d8:08:56:9d	Disabled
wifi0	WIFI	88:da:1a:83:2a:5c	Disabled
wifi0:nat1to1:0	ALIAS		10.0.0.100

## x Per interface

Firewall Service

Enabled

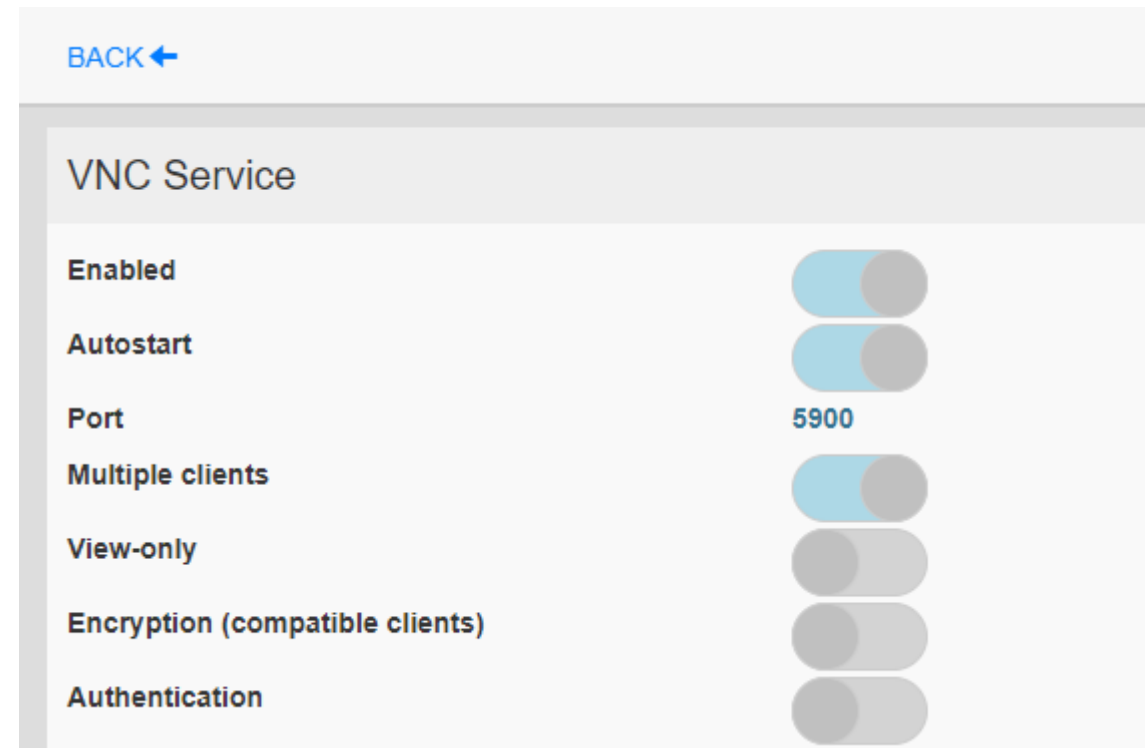
Only connections matching the rules below are allowed - refer to documentation for other services

Allow	Name	Source Interface	Source IP or Network	Port or Range	Protocol
<input checked="" type="checkbox"/>	Web server - HTTP	Any ▾		80	TCP ▾
<input checked="" type="checkbox"/>	Web server - HTTPS	Any ▾		443	TCP ▾
<input checked="" type="checkbox"/>	Device discovery	Any ▾		990-991	UDP ▾
<input checked="" type="checkbox"/>	FTP Command port	Any ▾		21	TCP ▾

- ✘ Linux command line
  - ✘ PING

```
10.10.22.4 - PuTTY
UN65HSXXM01000535 admin@EJMDD:~$ cd ..
UN65HSXXM01000535 admin@EJMDD:/home$ cd ..
UN65HSXXM01000535 admin@EJMDD:/$ ls
bin          etc          lib          mnt          sbin         usr
boot        files.count  lost+found   proc         sys          var
dev          home         media        run          tmp
UN65HSXXM01000535 admin@EJMDD:/$ cd mnt
UN65HSXXM01000535 admin@EJMDD:/mnt$ ls
configos  data          factory      sdcard
UN65HSXXM01000535 admin@EJMDD:/mnt$ cd data
UN65HSXXM01000535 admin@EJMDD:/mnt/data$ ls
aquota.group  hmi          log          updateLog
aquota.user   home         lost+found   updateStatus
UN65HSXXM01000535 admin@EJMDD:/mnt/data$ cd hmi
UN65HSXXM01000535 admin@EJMDD:/mnt/data/hmi$ ls
jmlauncher.xml  qthmi
UN65HSXXM01000535 admin@EJMDD:/mnt/data/hmi$ cd qthmi
UN65HSXXM01000535 admin@EJMDD:/mnt/data/hmi/qthmi$ ls
codesys_auto    package.info  uninstall.sh
deploy          run.sh        update.sh
install.sh      stop.sh       updatereinfo.txt
UN65HSXXM01000535 admin@EJMDD:/mnt/data/hmi/qthmi$
```

## x Maintenance en support

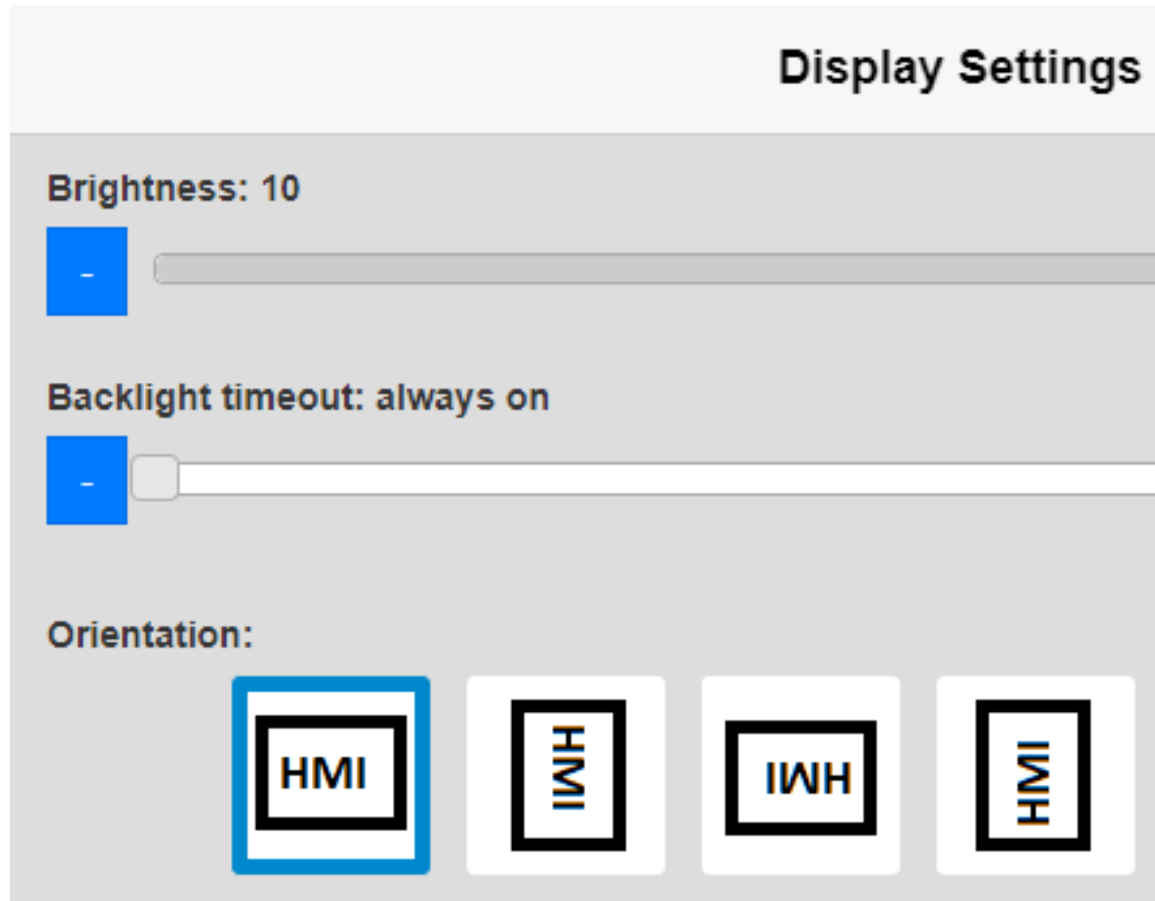




## x PLCM en PLIO modules



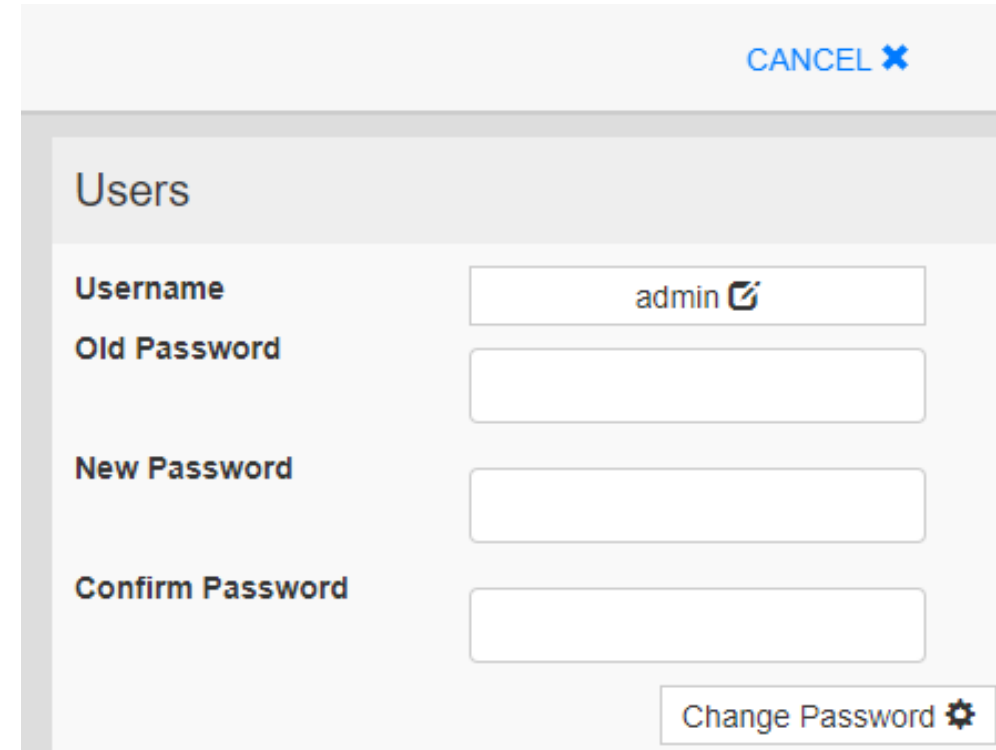
- ✘ **BSP update**
- ✘ **Settings**
- ✘ **Data**
- ✘ **Splash image**



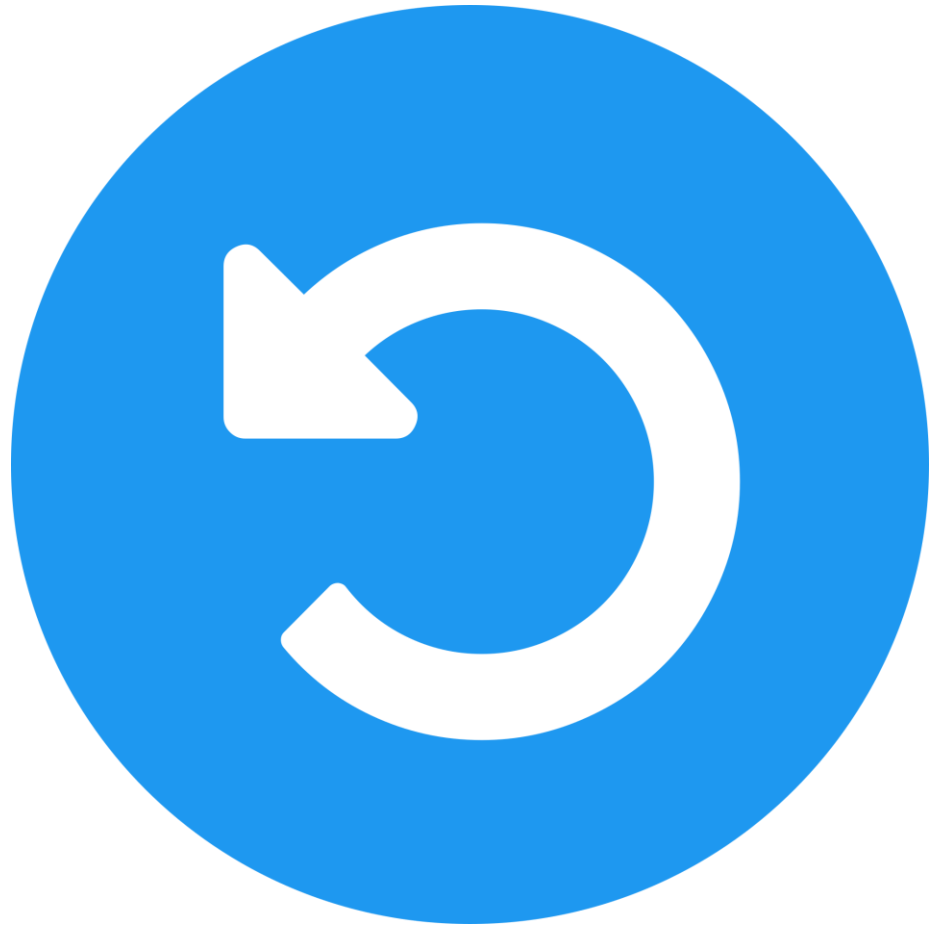
- ✘ **Brightness**
- ✘ **Backlight timeout**
- ✘ **Orientation**

# Authentication

- ✘ JMobile up- en download beveiliging
- ✘ BSP  $\geq$  1.3
  - ✘ Min. 8 karakters
  - ✘ Hoofdletter(s)
  - ✘ Cijfers
  - ✘ Speciale karakters



A screenshot of a mobile application interface for changing a user's password. The interface is titled "Users" and includes a "CANCEL" button in the top right corner. The form contains four input fields: "Username" (pre-filled with "admin" and a copy icon), "Old Password", "New Password", and "Confirm Password". A "Change Password" button with a gear icon is located at the bottom right of the form.



- x Config OS**
- x Main OS**

**Restart**

Config OS

Main OS

**0180-466004**

**YouTube**

**support@hiflex.nl**

**verkoop@hiflex.nl**

**Bedankt voor  
je aandacht**